

The logo for PERIONEXT, featuring the word "PERIONEXT" in a bold, sans-serif font. Above the text is a circular graphic composed of concentric arcs and a dotted outer ring, resembling a stylized eye or a medical instrument.

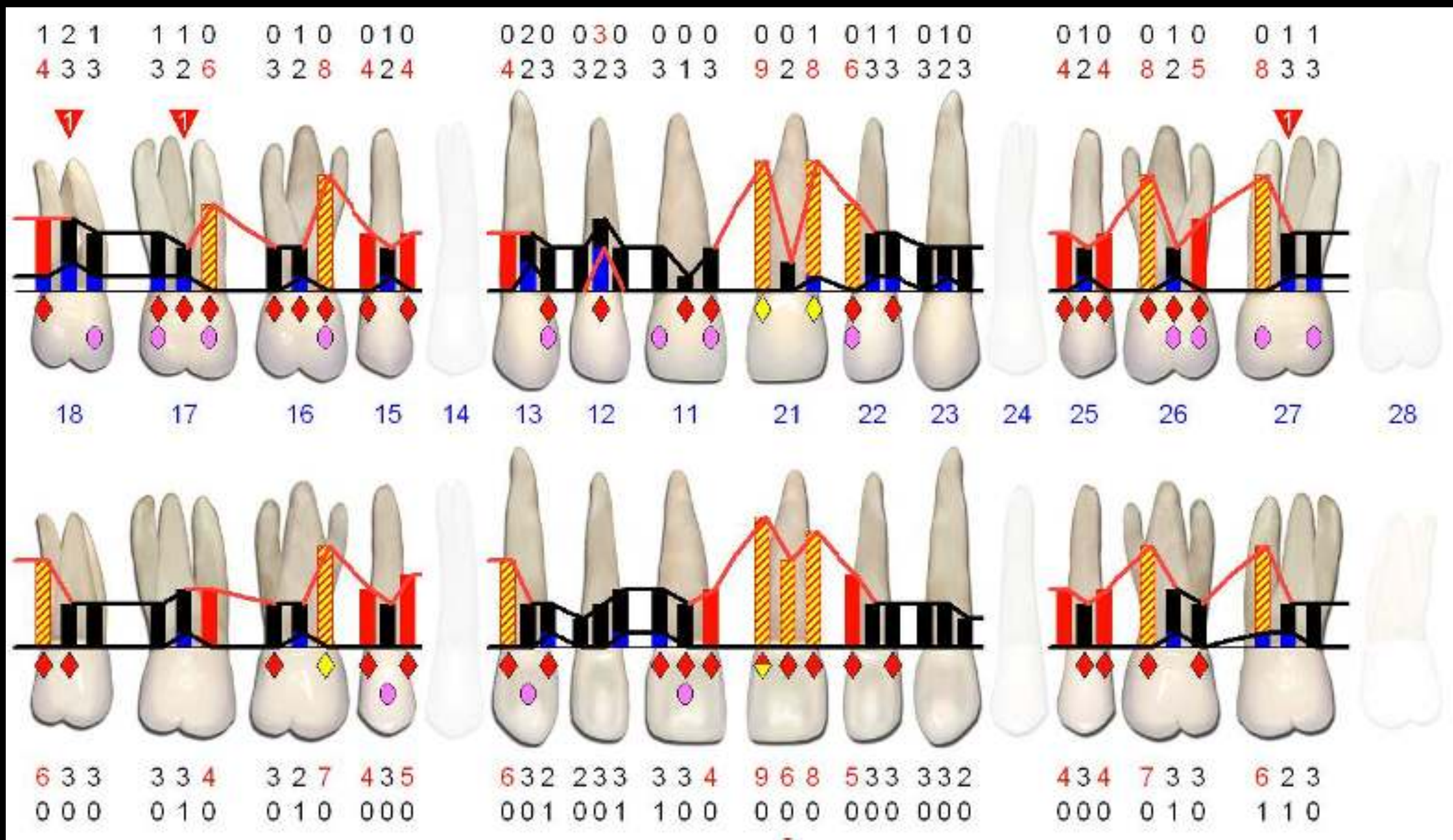
I Concurso
de casos clínicos
en Periodoncia

Periodontal Regeneration with only EMD:
M-MIST vs. Soft Tissue Wall Technique

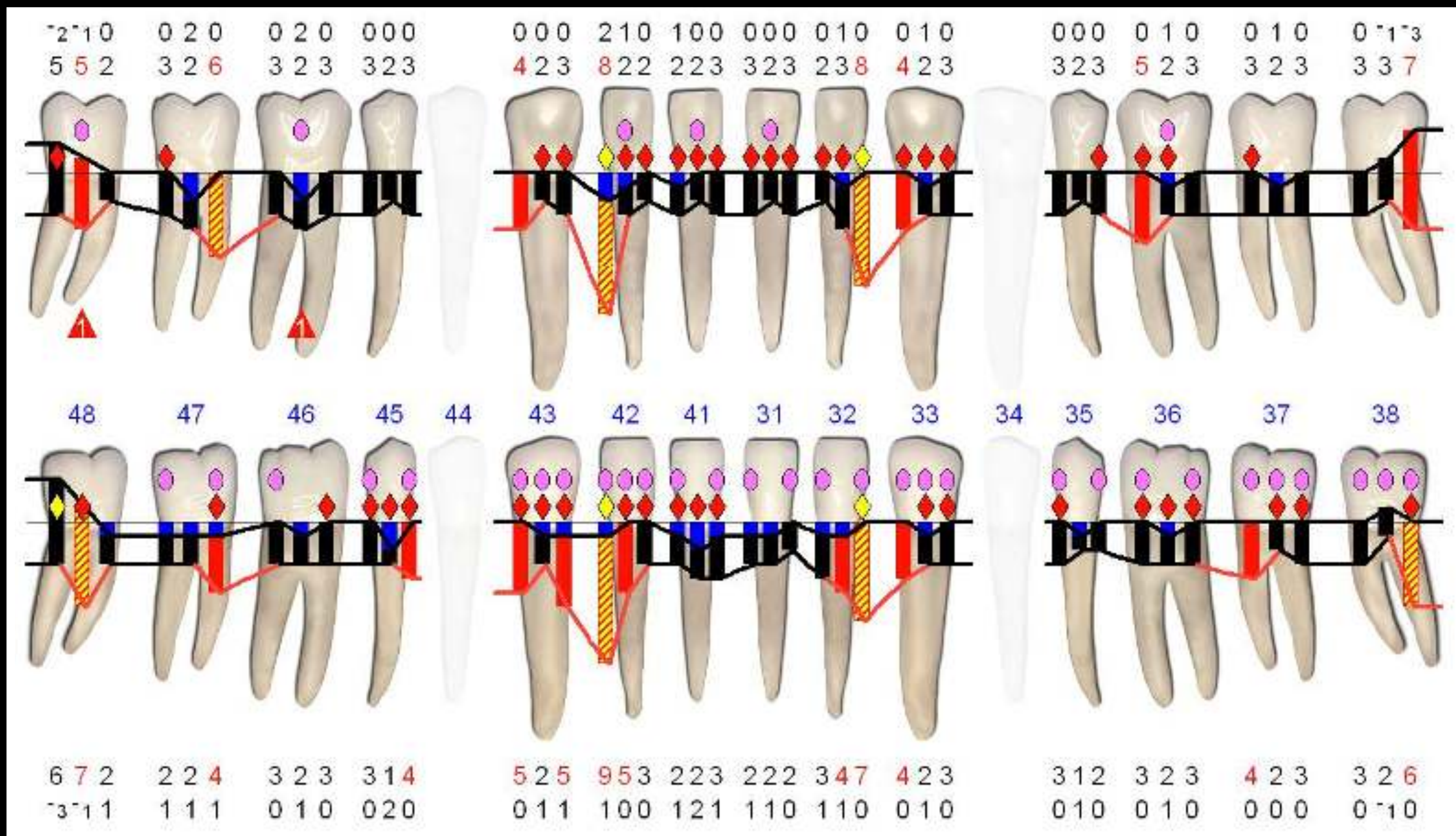
View by sextants



Periodontal chart: Baseline



Periodontal chart: Baseline



Periodontal indexes

FMPS

55%

FMBS

51%

Sup

6%

Diagnosis

Initial Treatment Plan

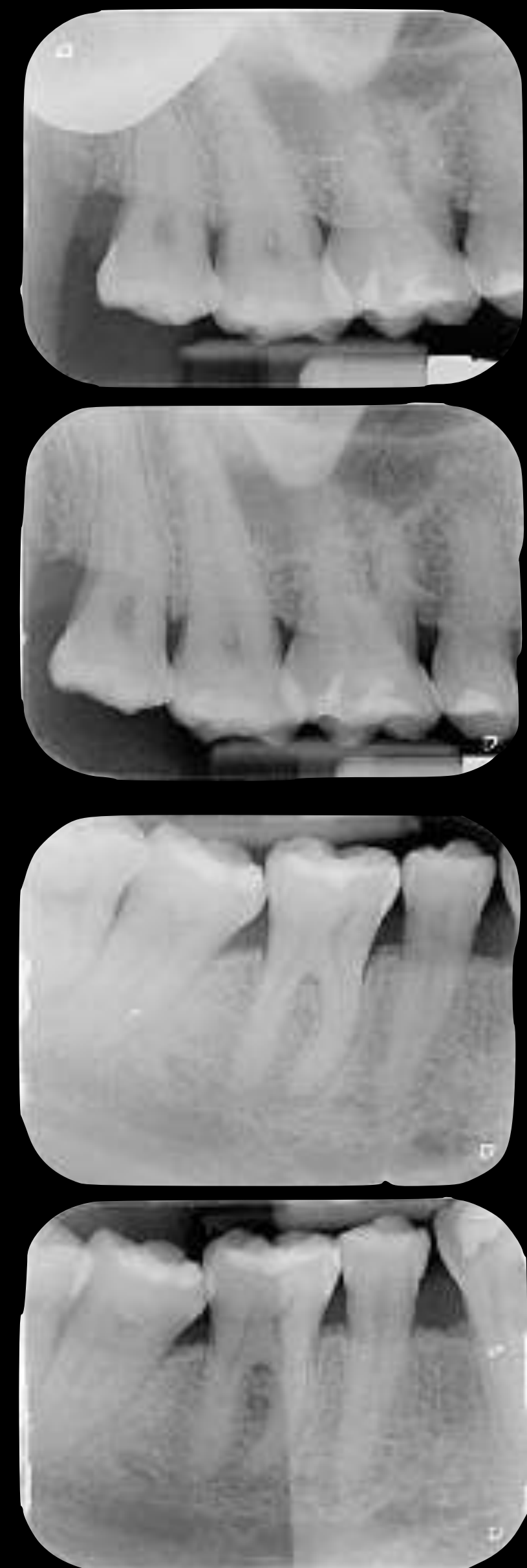
Re-evaluation

M-MIST #32

STWT #42

R a d i o g r a p h i c e x a m i n a t i o n

Diagnosis



Initial Treatment Plan



Re-evaluation



M-MIST #32



STWT #42



Periodontal Diagnosis

2017 WORLD WORKSHOP

WILEY

Journal of Clinical Periodontology

A new classification scheme for periodontal and peri-implant diseases and conditions – Introduction and key changes from the 1999 classification

Jack G. Caton¹ | Gary Armitage² | Tord Berglundh³ | Iain L.C. Chapple⁴ | Søren Jepsen⁵ | Kenneth S. Kornman⁶ | Brian L. Mealey⁷ | Panos N. Papapanou⁸ | Mariano Sanz⁹ | Maurizio S. Tonetti¹⁰

Periodontitis
Generalized Stage III
Grade C

Mucogingival Deformities and Conditions
B. Gingival recessions

Caton et al. 2018 (JCP & JOP)
Papapanou, Sanz et al. 2018 (JCP & JOP)
Jepsen, Caton et al. 2018 (JCP & JOP)

Diagnosis

Initial Treatment Plan

Re-evaluation

M-MIST #32

STWT #42

Treatment sequence

Systemic phase

Initial phase

Corrective phase

Periodontal surgery

Restorative

SPT

● Not required

Treatment sequence

Systemic phase

Initial phase

Corrective phase

Periodontal surgery

Restorative

SPT



- Information and Motivation
- OHI (Electric toothbrush + interdental brushing + localized flossing)
- SRP
- Antiseptic mouth wash (2 wks 2/day
PerioAid - CHX 0.12% + CPC 0.05%)
- Excavation of dental caries and tooth restorations (21, 22, 24, 46)
- Re-evaluation at 6 weeks

Graves et al. 1989 (JOP)
Christou et al. 1998 (JOP)
Herrera et al. 2003 (JCP)

Treatment sequence

Systemic phase

Initial phase

Corrective phase

Periodontal surgery

Restorative

SPT

- Information and Motivation
- OHI (Electric toothbrush + interdental brushing + localized flossing)
- SRP
- Antiseptic mouth wash (2 wks 2/day
PerioAid - CHX 0.12% + CPC
0.05%)
- Excavation of dental caries and tooth restorations (21, 22, 24, 46)
- **Re-evaluation at 6 weeks**

Graves et al. 1989 (JOP)
Christou et al. 1998 (JOP)
Herrera et al. 2003 (JCP)

Diagnosis

Initial Treatment Plan

Re-evaluation

M-MIST #32

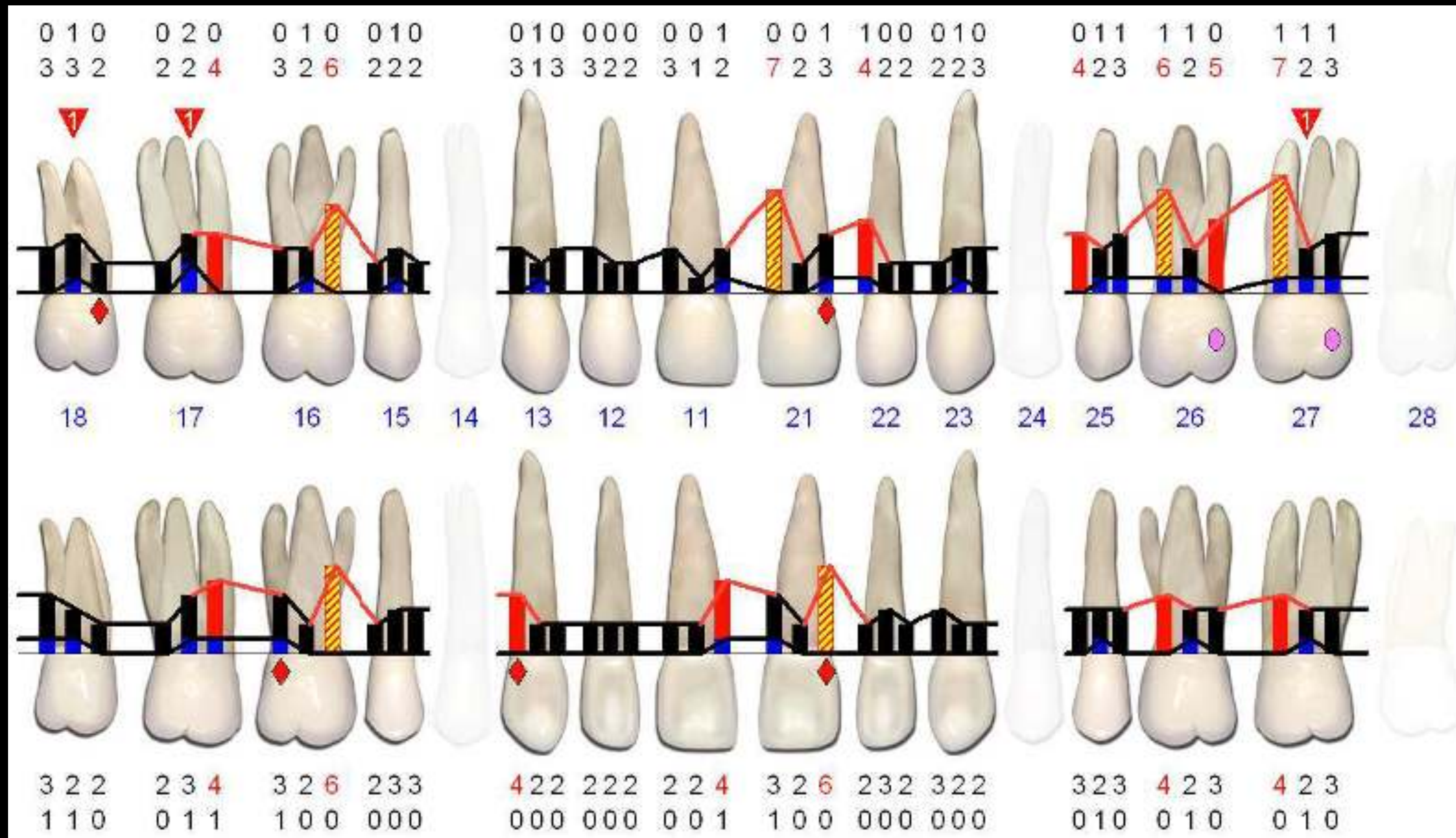
STWT #42

Re-evaluation at 6 weeks

View by sextants



Periodontal chart: Re-evaluation



Periodontal indexes

FMPS

2%

FMBS

9%

Sup

0%

Diagnosis

Initial Treatment Plan

Re-evaluation

M-MIST #32

STWT #42

Treatment sequence

Systemic phase

Initial phase

Corrective phase

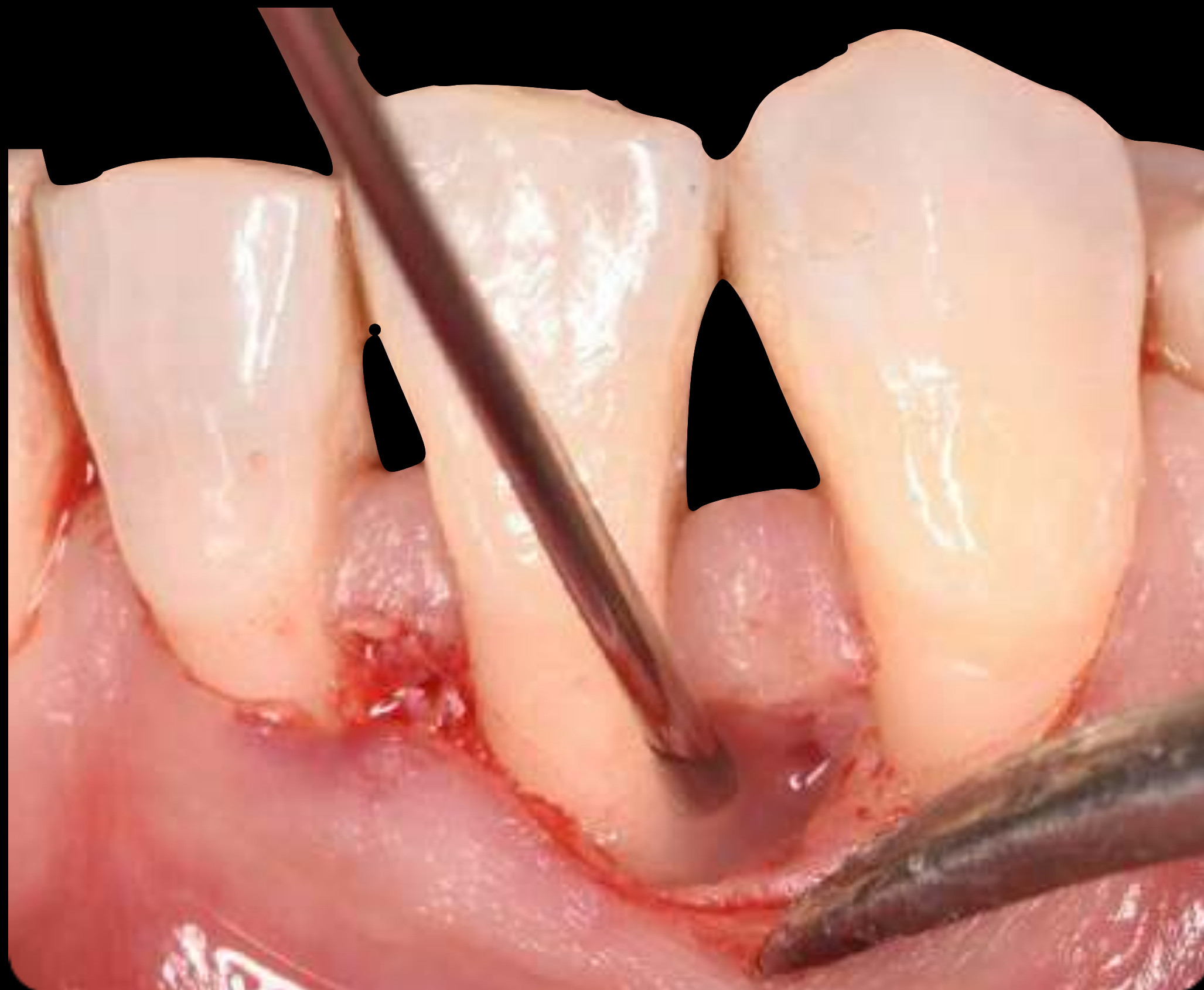
Periodontal surgery

Restorative

SPT

- Periodontal regeneration
(21-32-42)
- Access Flap/regeneration
(16-26-27)

Regeneration 1 - #32



Modified Minimally Invasive Surgical Technique
(M-MIST)

Regeneration 2 - #42



Soft Tissue Wall Technique
(STWT)

#32



Planification



Objective:

To regenerate periodontal attachment in order to improve the prognosis of the tooth, contributing to the long-term preservation of its periodontium by facilitating plaque removal and infection control.

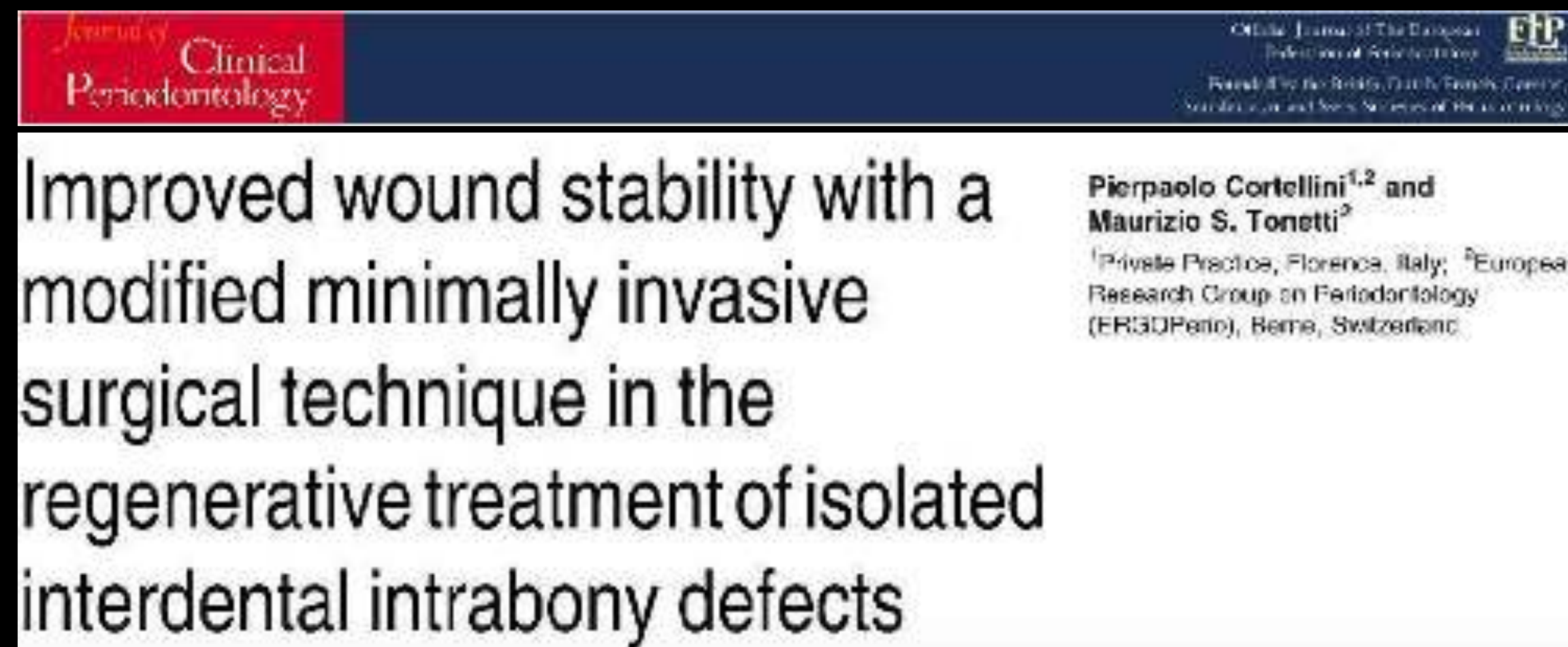


Treatment choice



Choice:

Periodontal Regeneration with M-MIST



Trombelli et al. 2007 (DC)

Cortellini & Tonetti 2009 (JCP)

Incision



Degranulation



PrefGel© & Emdogain©



Suture



Postsurgical care

- Ibuprofen (600 mg every 12 hours, 3 days);
- Chlorhexidine 0.12% + CPC 0.05% mouthwashes (PerioAid) (2 times/day, 6 weeks);
- Avoid mechanical oral hygiene procedures, chewing and trauma in the treated area;
- Professional tooth cleaning (weekly, 6 weeks)
- Suture removal at 14 days.



14 days healing

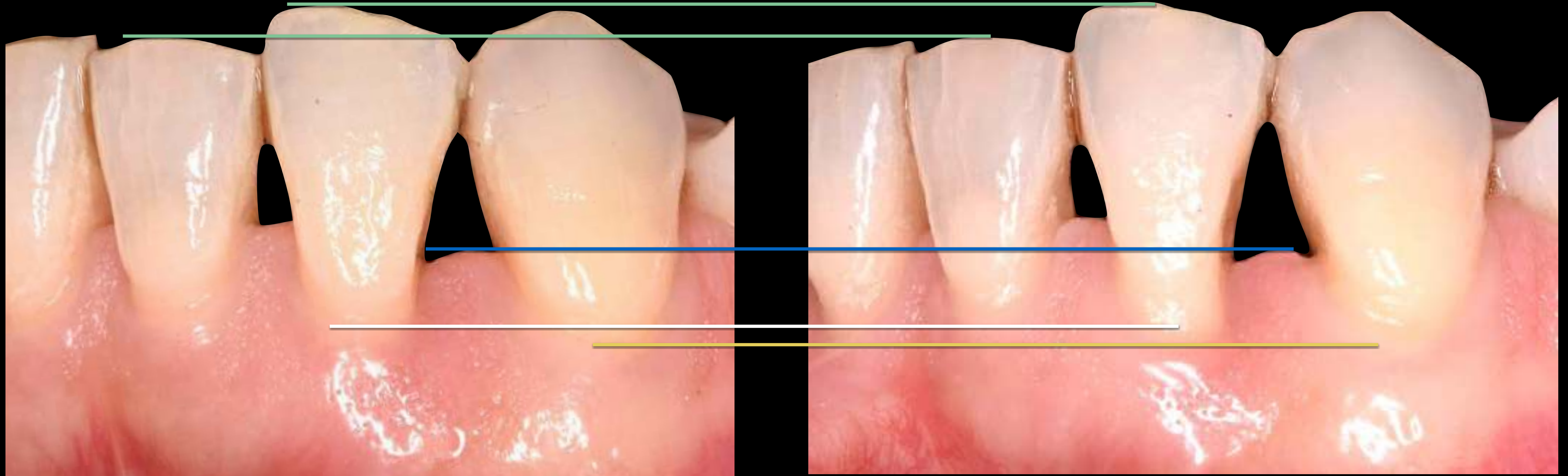


6-months healing



Pre-Surgery

6-months healing

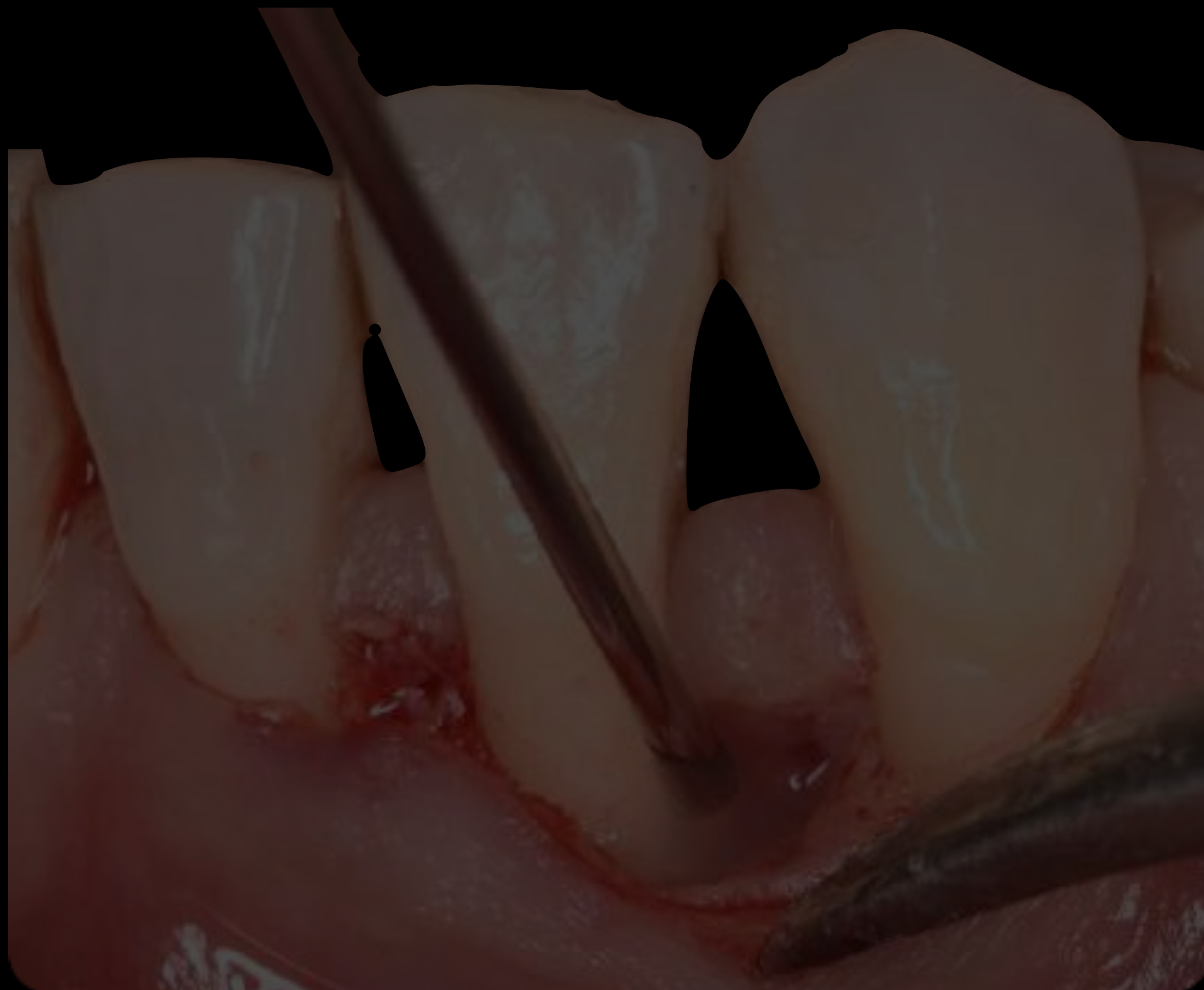


Pre-Surgery

6-months healing



Regeneration 1 - #32



Modified Minimally Invasive Surgical Technique
(M-MIST)

Regeneration 2 - #42

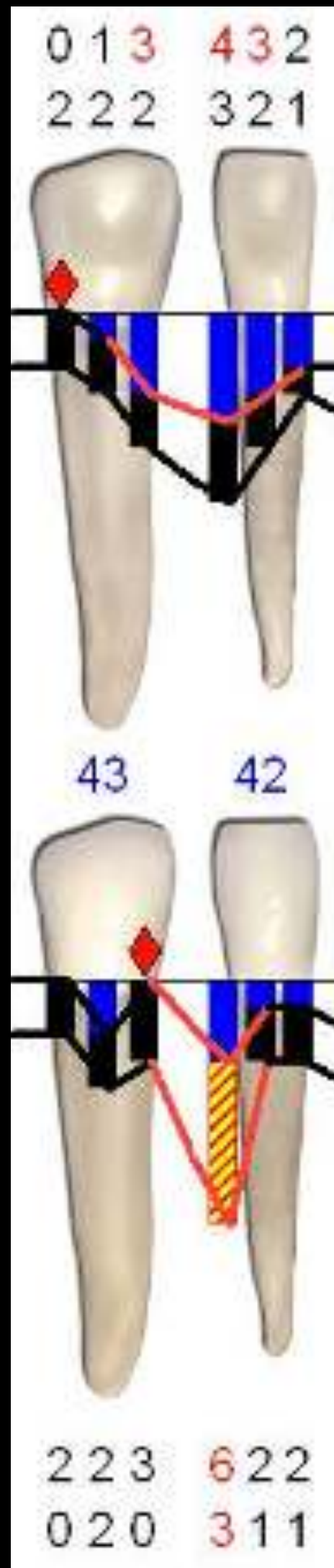


Soft Tissue Wall Technique
(STWT)

#42



Planification



Objective:

To regenerate periodontal attachment in order to improve the prognosis of the tooth, contributing to the long-term preservation of its periodontium by facilitating plaque removal and infection control.

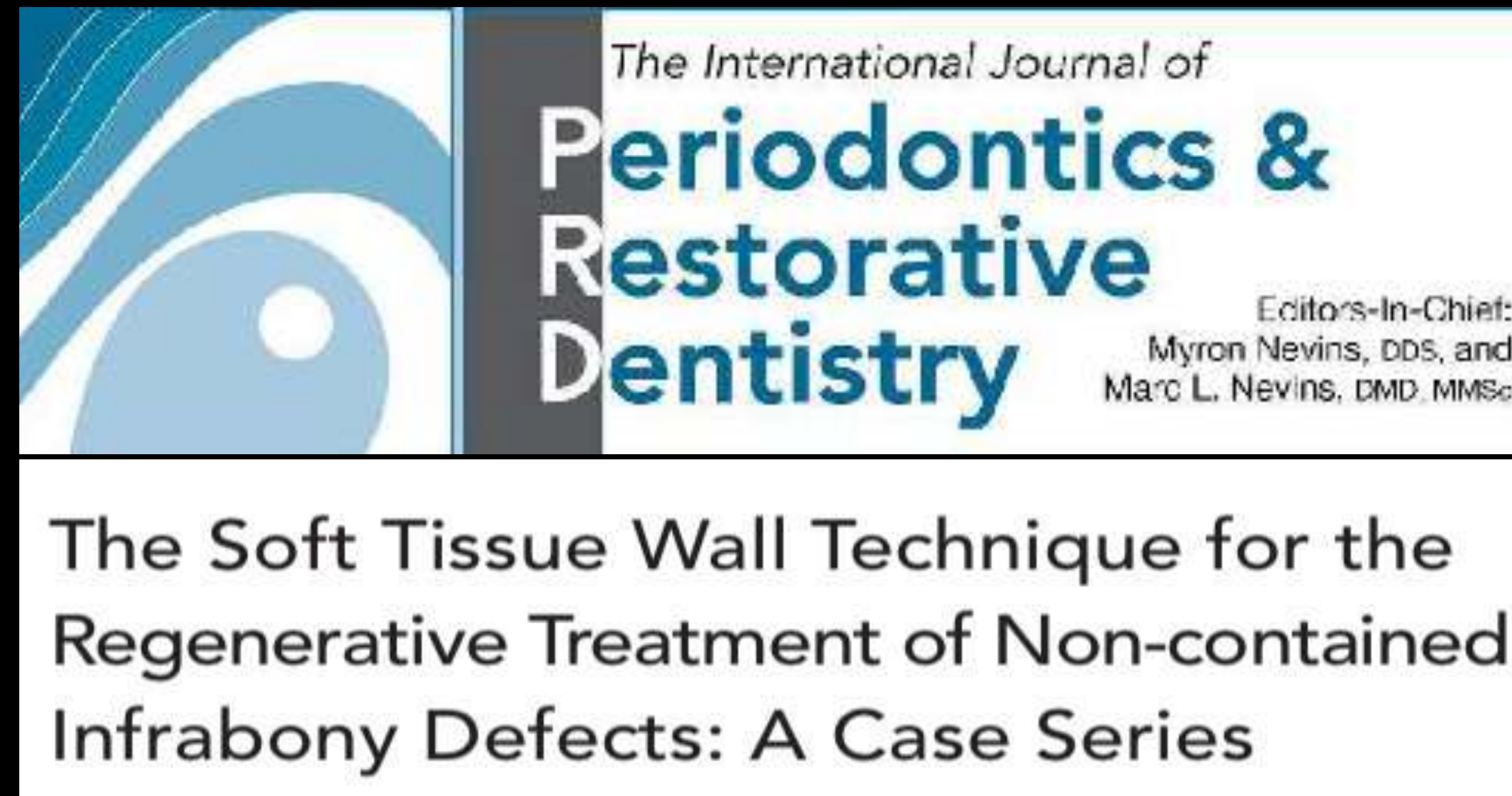


Treatment choice



Choice:

Soft Tissue Wall Technique



Rasperini et al. 2013 (IJPRD)

Zucchelli et al. 2014 (IJPRD)

Diagnosis

Initial Treatment Plan

Re-evaluation

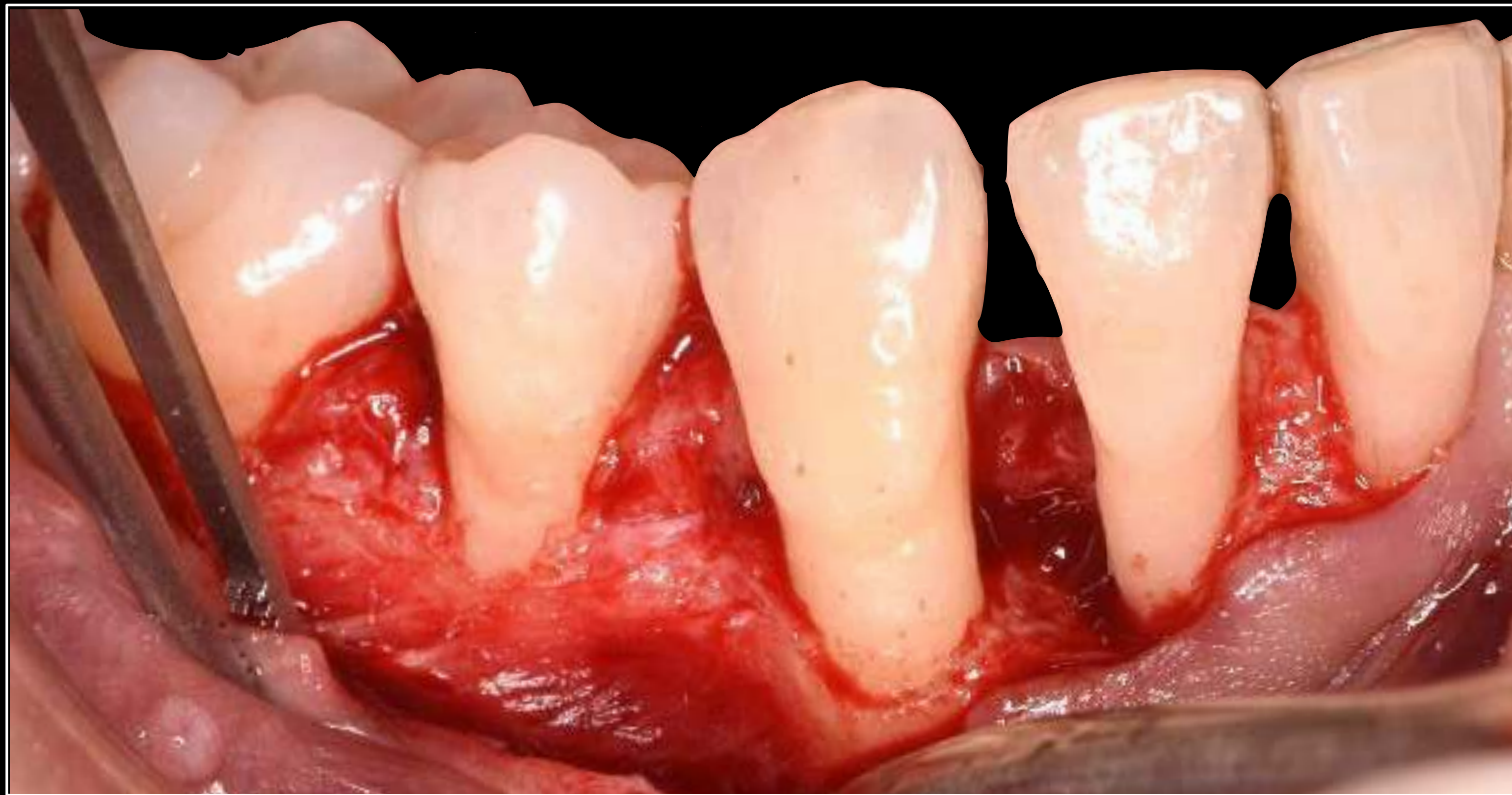
M-MIST #32

STWT #42

Incision



Flap elevation



Defect assessment



Flap mobilization and Connective tissue harvesting



Diagnosis

Initial Treatment Plan

Re-evaluation

M-MIST #32

STWT #42

De-epithelized graft



Diagnosis

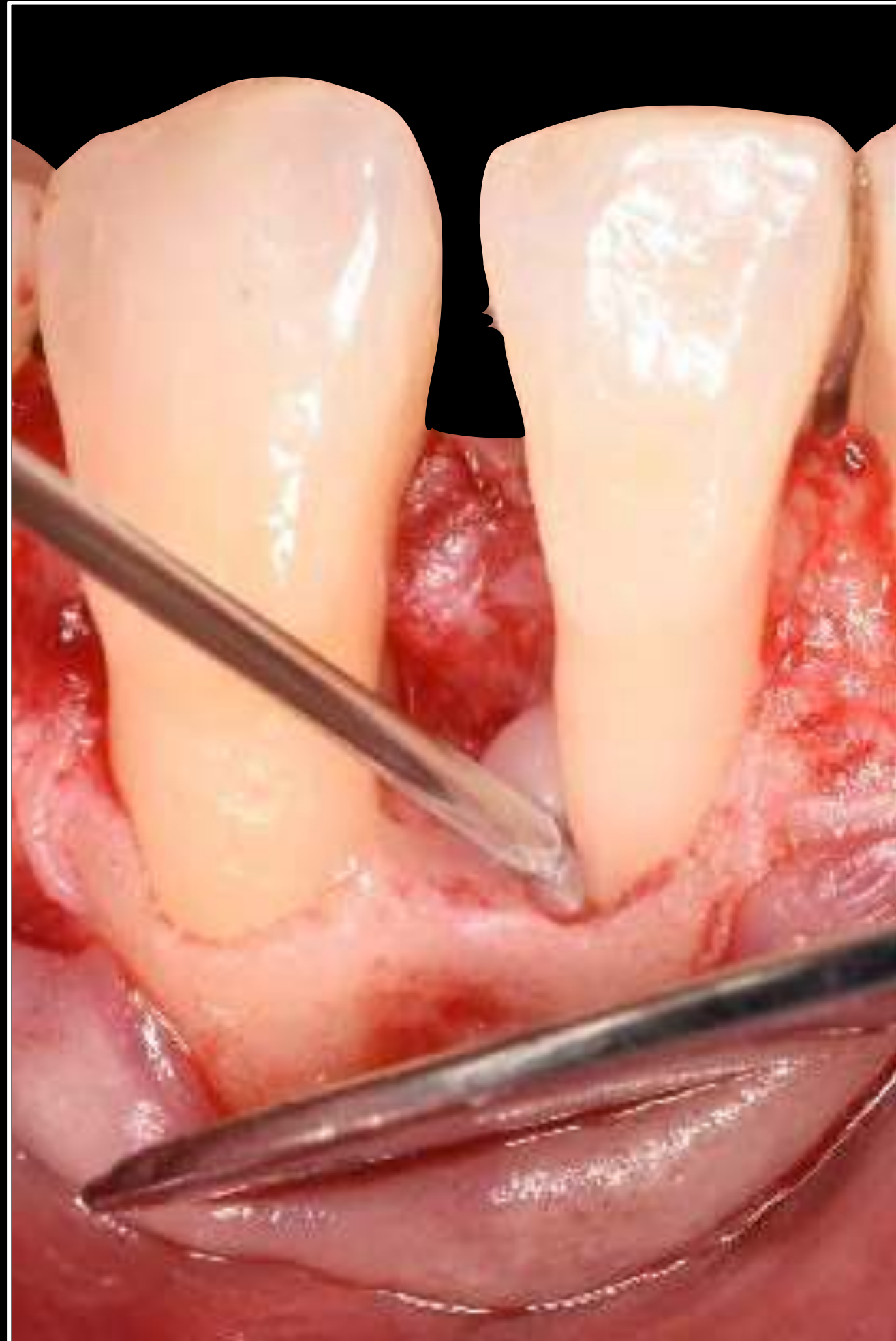
Initial Treatment Plan

Re-evaluation

M-MIST #32

STWT #42

PrefGel©



Diagnosis

Initial Treatment Plan

Re-evaluation

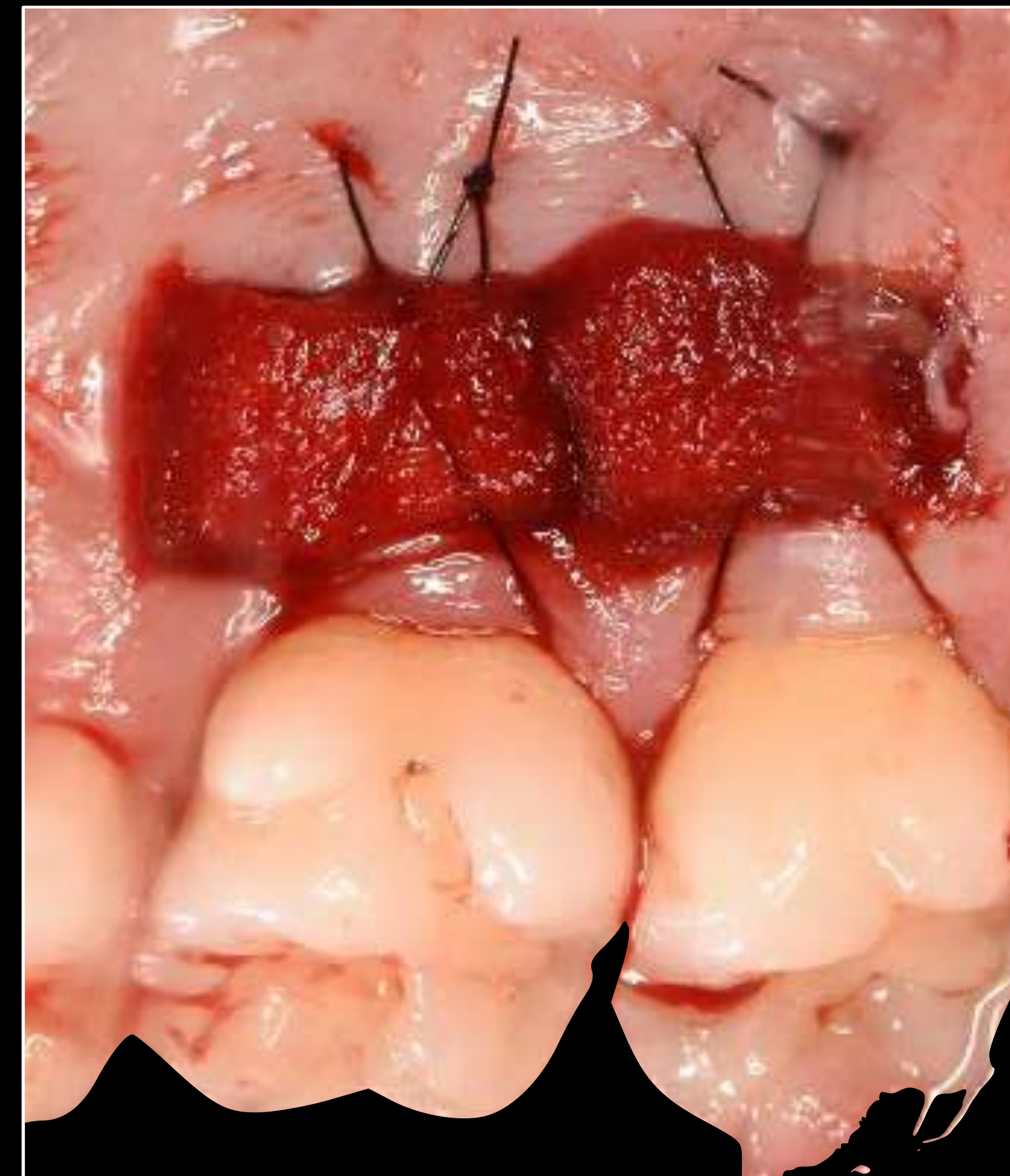
M-MIST #32

STWT #42

Emdogain®



Suture



Suture



Suture



Postsurgical care

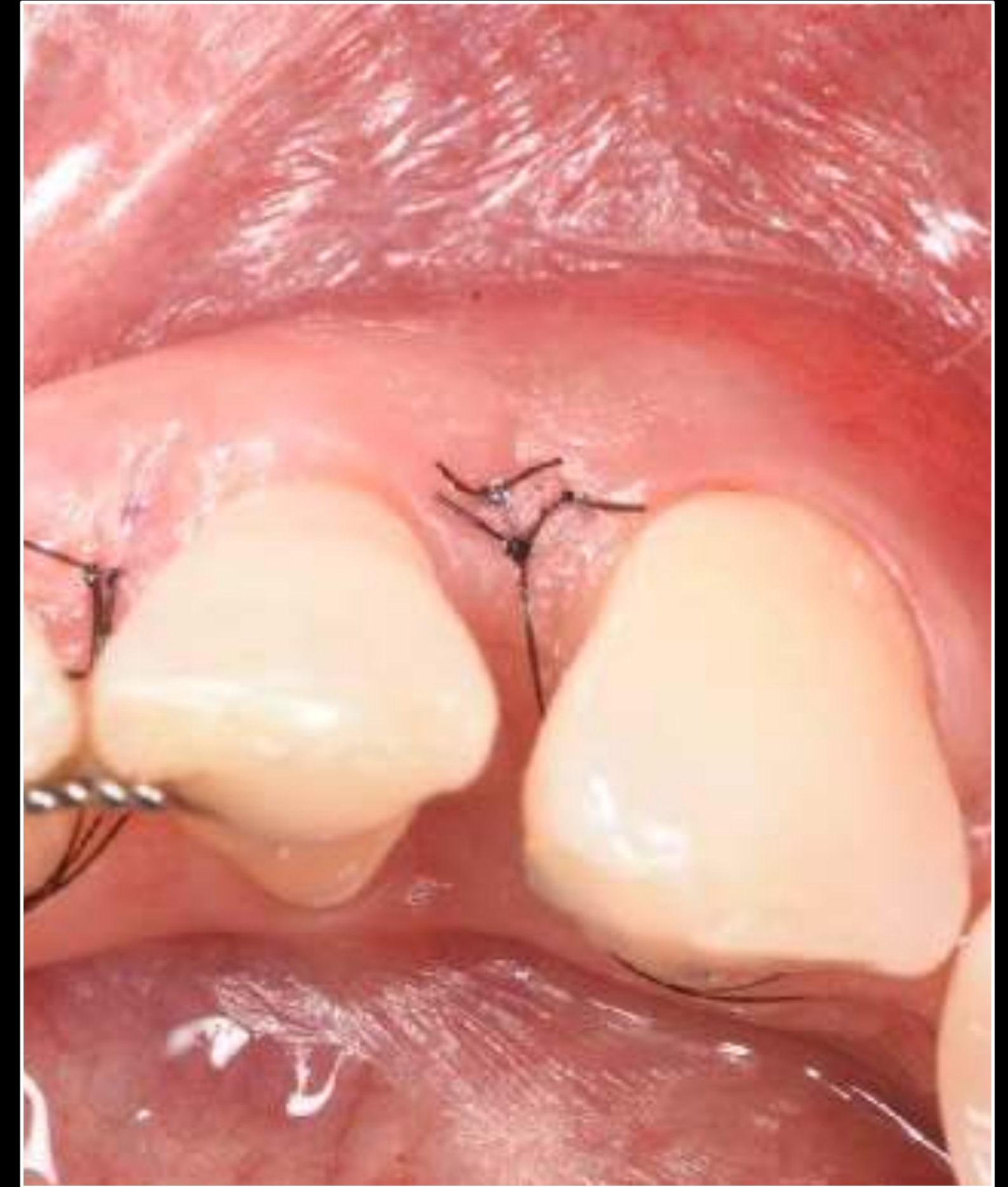
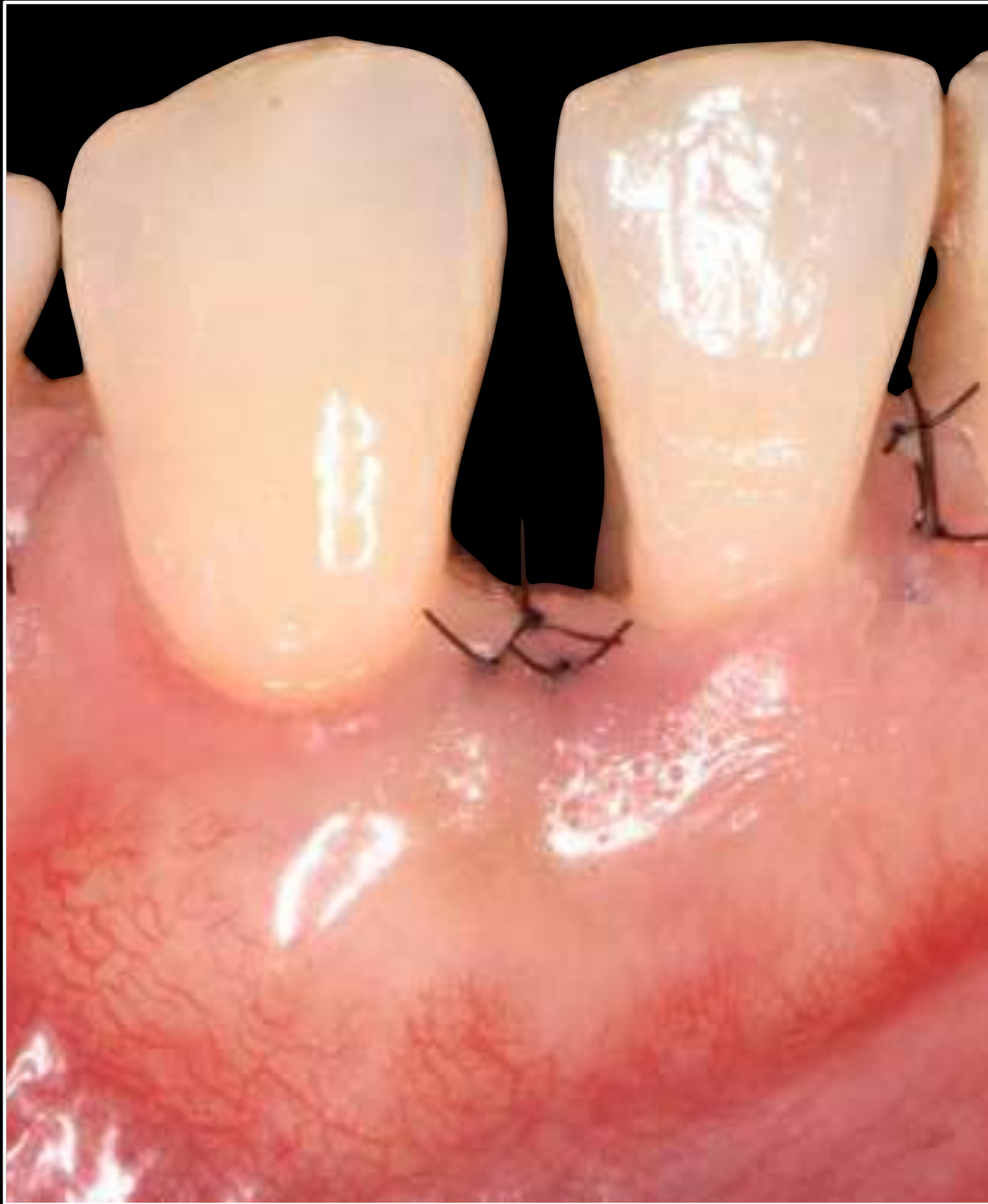
- Ibuprofen (600 mg every 12 hours, 3 days);
- Chlorhexidine 0.12% + CPC 0.05% mouthwashes (PerioAid) (2 times/day, 6 weeks);
- Avoid mechanical oral hygiene procedures, chewing and trauma in the treated area;
- Professional tooth cleaning (weekly, 6 weeks)
- Suture removal at 14 days.



14 days healing



14 days healing

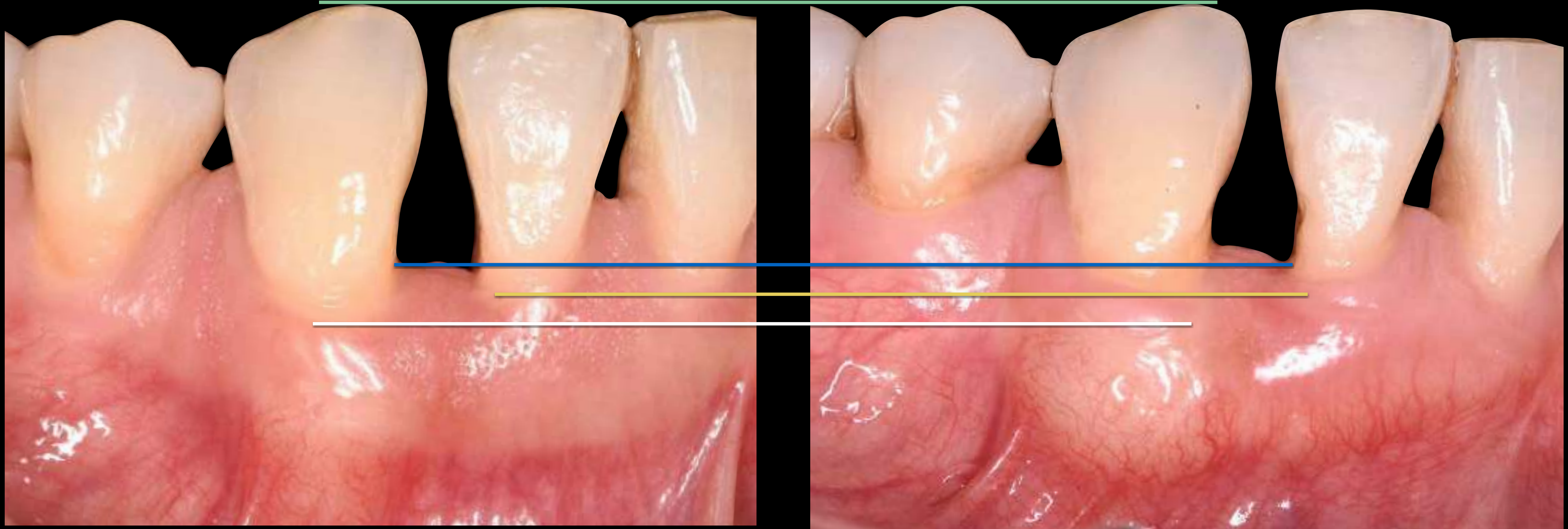


6-months healing



Pre-Surgery

6-months healing



Pre-Surgery



6-months healing

